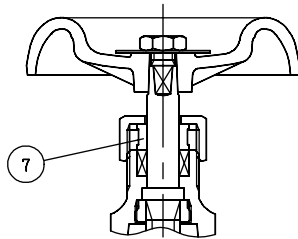
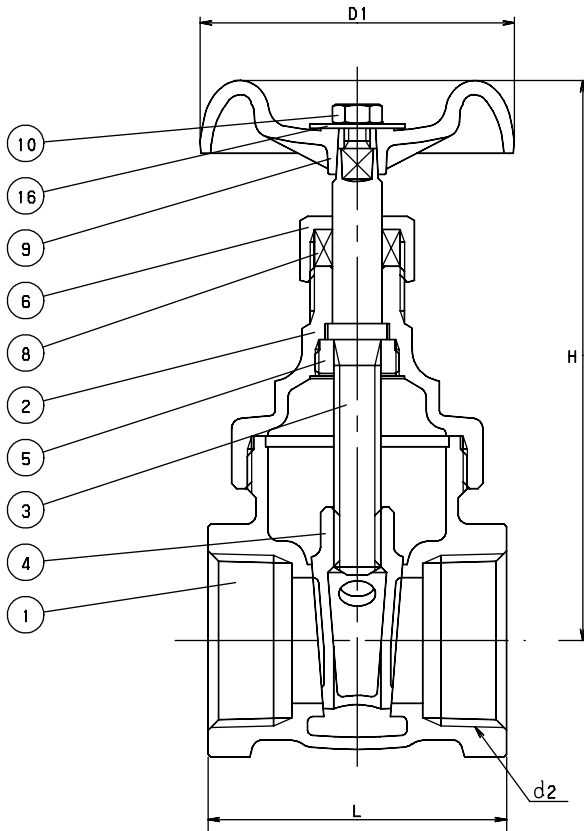


GATE

CLASS 125 BRONZE

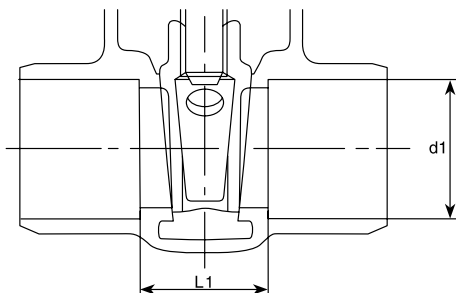
Screw-Over-Bonnet • Non-Rising Stem
Solid Wedge Disc

CODE # 27 (AKH) THREADED



1 1/2 & 2

CODE # 28 (CH) SOLDER*



STANDARDS

END TO END	KITZ
THREADED ENDS	NPT
SOLDER JOINT ENDS	ANSI B16.18
WALL THICKNESS	KITZ
DESIGN	KITZ

PRESSURE/TEMPERATURE

125 PSI - SATURATED STEAM TO 353°F
- FLUID TO 406°F
200 PSI NON-SHOCK COLD WATER, OIL OR GAS

MATERIAL LIST

NO.	NAME OF PART	SPECIFICATION
1	BODY	CAST BRONZE (ASTM B62)
2	BONNET	CAST BRONZE (ASTM B62)
3	STEM	BRASS (KITZ "K" METAL)
4	DISC (3/8 - 1/2)	KITZ "K" METAL
	(3/4 - 2)	CAST BRONZE (ASTM B62)
5	LOCK NUT	BRASS ROD (B16)
6	PACKING NUT	FORGED BRASS (B283, C37700)
7	GLAND	BRASS ROD (B16)
8	GLAND PACKING	PLASTIC GRAPHITE
9	HAND WHEEL (3/8 - 1 1/4)	ZINC DIE-CAST (B86)
	(1 1/2 - 2)	ALUMINUM DIE-CAST (B85)
10	WHEEL NUT	CARBON STEEL (A307 Gr. B)
16	NAME PLATE	ALUMINUM

DIMENSIONS - WEIGHTS - QUANTITIES

d2 SIZE	H	D1	L	L1	d1 max.	d1 min.	APPROX. NET WT.	CARTON QTY
3/8	2.91	1.97	1.65	.78	.506	.502	56	96
1/2	3.15	1.97	1.77	.81	.631	.627	34	48
3/4	3.54	2.17	1.97	.90	.881	.877	27	30
1	4.13	2.36	2.24	1.01	1.132	1.128	57	40
1 1/4	4.65	2.76	2.40	1.13	1.382	1.378	58	30
1 1/2	5.31	3.15	2.64	1.25	1.633	1.628	63	24
2	6.26	3.54	2.91	1.34	2.133	2.128	67	16

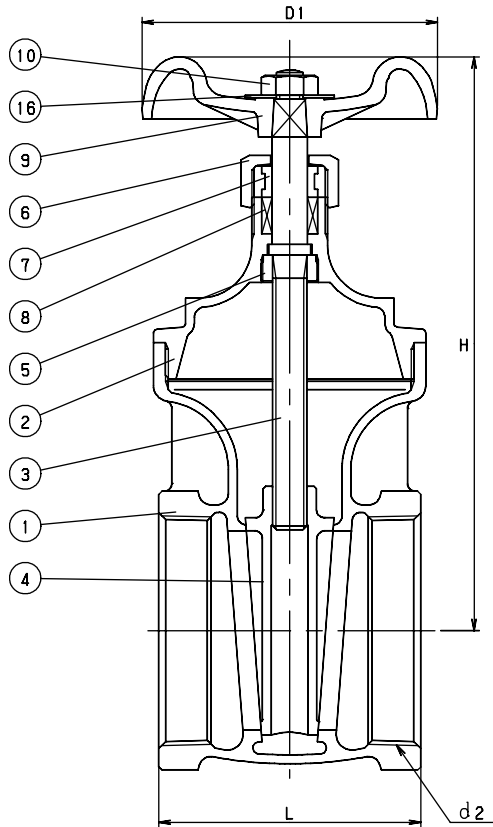
*SEE PRESSURE/TEMPERATURE LIMITATIONS
FOR SOLDER JOINT VALVES - P. BIV-50.

GATE

CLASS 125 BRONZE

Screw-In-Bonnet • Non-Rising Stem
Solid Wedge Disc

CODE # 27 (AKH) THREADED



STANDARDS

END TO END	KITZ
THREADED ENDS	ANSI B1.20.1
SOLDER JOINT ENDS	ANSI B16.18
WALL THICKNESS	KITZ
DESIGN	KITZ

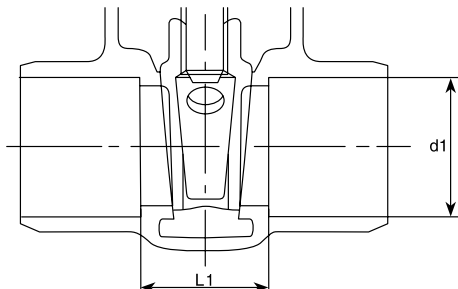
PRESSURE/TEMPERATURE

125 PSI - SATURATED STEAM TO 353°F - FLUID TO 406°F
200 PSI NON-SHOCK COLD WATER, OIL OR GAS

MATERIAL LIST

NO.	NAME OF PART	SPECIFICATION
1	BODY	CAST BRONZE (ASTM B62)
2	BONNET	CAST BRONZE (ASTM B62)
3	STEM	BRASS (KITZ "K" METAL)
4	DISC	CAST BRONZE (ASTM B62)
5	LOCK NUT	BRASS ROD (B16)
6	PACKING NUT	FORGED BRASS (B283, C37700)
7	GLAND	BRASS ROD (B16)
8	GLAND PACKING	PLASTIC GRAPHITE
9	HAND WHEEL	ALUMINUM DIE-CAST (B85)
10	WHEEL NUT	CARBON STEEL
16	NAME PLATE	ALUMINUM

CODE # 28 (CH) SOLDER*



DIMENSIONS - WEIGHTS - QUANTITIES

d2 SIZE	H	D1	L	L1	d1		APPROX. NET WT.	CARTON QTY
					Max.	Min.		
2 1/2	7.95	4.53	3.54	1.59	2.633	2.628	60	8
3	8.78	5.31	3.94	1.78	3.133	3.128	62	6
4	11.02	6.10	4.76	2.49	4.133	4.128	64	3

*SEE PRESSURE/TEMPERATURE LIMITATIONS
FOR SOLDER JOINT VALVES - P. BIV-50.