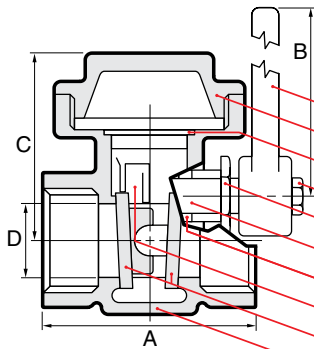


Cast Bronze Lever Operated Quick Opening Gate Valves

B-GL

Cast 2 piece construction
Large port
ASME B1.20.1 NPT ends
Adjustable packing gland
Class 125 WSP, 200 WOG



PART / MATERIAL

1. Lever / Cast Aluminum ASTM B85
2. Cap / Brass ASTM B283-C37700
3. Cap Gasket / Bronze filled PTFE
4. Screw / Steel ASTM A36
5. Packing Nut / Brass ASTM B124-C37700
6. Stem / Brass ASTM B283-C37700
7. Packing / Carbon-NBR-PTFE composite
8. Disc Arm / Brass ASTM B283-C37700
9. Disc / Brass ASTM B283-C37700
10. Body / Bronze ASTM B62-C83600

DIMENSIONS

size	10	15	20	25	32	40	50	65	80	100
mm/in	3/8	1/2	3/4	1	1 1/4	1 1/2	2	2 1/2	3	4
A	44	46	51	57	61	67	77	93	101	115
mm/in	1.73	1.81	2.01	2.24	2.40	2.64	3.03	3.66	3.98	4.53
B	80	80	100	100	120	136	165	205	205	255
mm/in	3.15	3.15	3.94	3.94	4.72	5.35	6.50	8.07	8.07	10.04
C	40	40	48	55	62	68	81	108	121	148
mm/in	1.57	1.57	1.89	2.17	2.44	2.68	3.19	4.25	4.76	5.83
D	15	15	20	25	32	37	47	58	72	91
mm/in	0.59	0.59	0.79	0.98	1.26	1.46	1.85	2.28	2.80	3.62
CV	5.5	10.6	17	28	69	118	185	330	485	770
Weights	0.82	0.82	1.23	1.70	2.20	3.13	4.19	8.2	10.8	17.64
lb/kg	0.37	0.37	0.56	0.77	1.00	1.42	1.90	3.7	4.9	8.0

PRESSURE - TEMPERATURE RATING

