



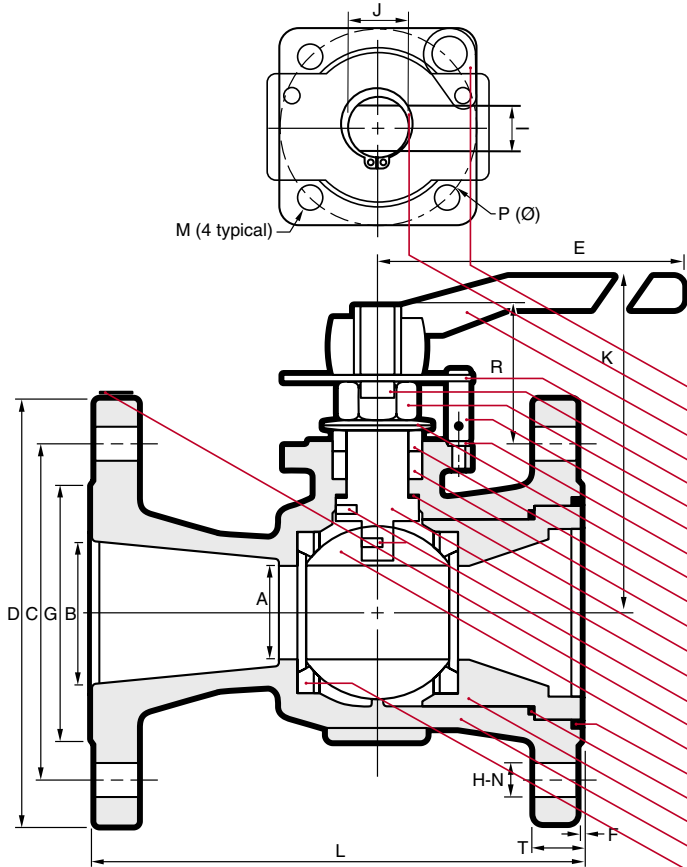
M. A. Stewart & Sons Ltd.
VALVES AND FITTINGS

F Series Flanged Stainless Steel Ball Valves

F-150-SS-R-N



Reduced port, One piece body
ANSI B16.34 Class 150
Blowout-proof stem
ISO 5211 Mounting pad
Floating Ball, Anti-static device
Fire-safe design



NAME / MATERIAL

STANDARD	OPTIONAL
1. Lock Plate / Stainless Steel 304 - A276	
2. Retaining Ring / Carbon Steel	
3. Handle / Ductile Iron	
4. Stopper Plate / Stainless Steel 304 - A276	
5. Lock Washer / Stainless Steel 304 - A276	
6. Gland Nut / Stainless Steel 304 - A276	
7. Stopper Pin / Stainless Steel 304 - A276	
8. Lock Washer / Stainless Steel 304 - A276	
9. Belleville Washer / Stainless Steel 301	
10. Gland / Stainless Steel 304 - A276	
11. Packing / PTFE	(FS*: Graphite)
12. Thrust Washer / RPTFE 15% GFT	
13. Stem / Stainless Steel 316 - A276	
14. Anti-Static Device / Stainless Steel 304 - A276	
15. Identification Plate / Stainless Steel 304 - A276	
16. Ball / A351 - CF8M	
17. N/A	FS* only: Body Seal / Graphite
18. Body Seal / PTFE	
19. Body Insert / A351 - CF8M	(LC: A352 LCC)
20. Body / A351 - CF8M	(LC: A352 LCC)
21. Seat / PTFE (TFM-1600)	

5.8

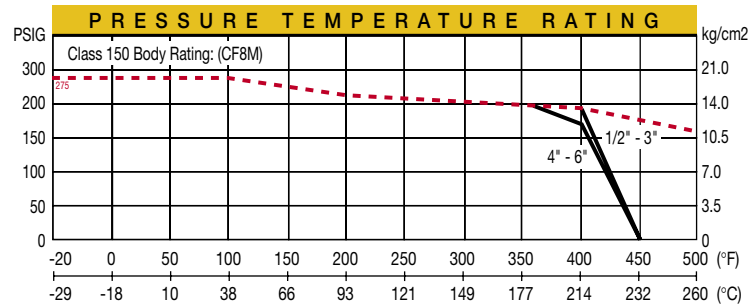
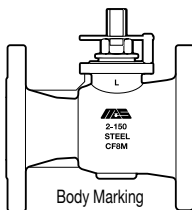
FIG.	F-150-SS-R-N	CLASS	150	SIZE	2	B16.34
SEAT	PTFE	BODY	CF8M	TRIM	316	NACE
RATING	275 PSIG AT 100°F/195 PSIG AT 400° MAX					

SS - IDENTIFICATION PLATE (1)

FIG.	F-150-SS-R-FS-N	CLASS	150	SIZE	2	B16.34
SEAT	PTFE	BODY	CF8M	TRIM	316	NACE
RATING	275 PSIG AT 100°F/195 PSIG AT 400° MAX					

SS-FS - IDENTIFICATION PLATE (1)

TEST PRESSURE	SHELL	SEAT
API-598		
HYDROSTATIC	425 PSIG	
AIR		80 PSIG
END TO END	ANSI B16.10 CLASS 150	
DIM. OF FLANGE	ANSI B16.5 CLASS 150	
WALL THICKNESS	ANSI B16.34 CLASS 150	



size	DIMENSIONS																		ISO 5211 flange type	Weight (kg/lb)
	A	B	C	D	E	F	G	H	I	J	K	L	M	N	P	T	R			
2"	38	50	120.5	152	230	1.6	92	19	14	20	125	178	0.3125	4	70	15.9	49	F07	8.00	
	1.50	1.97	4.75	5.98	9.06	0.06	3.62	0.75	0.55	0.79	4.92	7.00			2.76	0.63	1.93		17.60	
3"	58	76	152.5	190	400	1.6	127	19	17	25	168	203	0.3125	4	70	19.1	59	F07	15.70	
	2.28	3.00	6.00	7.48	15.75	0.06	5.00	0.75	0.67	0.98	6.61	8.00			2.76	0.75	2.32		34.54	
4"	76	102	190.5	229	400	1.6	157	19	17	25	183	229	0.3125	8	70	23.9	59	F07	24.60	
	3.00	4.02	7.50	9.22	15.75	0.06	6.18	0.75	0.67	0.98	7.20	9.02			2.76	0.94	2.32		54.12	
6"	114	152	241.5	279	750	1.6	216	22	23	34	245	267	0.5000	8	125	25.4	73	F12	49.50	
	4.49	5.98	9.50	10.98	29.53	0.06	8.50	0.88	0.91	1.34	9.65	10.51			4.92	1.00	2.87		108.90	