

F Series Flanged Carbon Steel Ball Valves

F-150-CS-R-SS-N



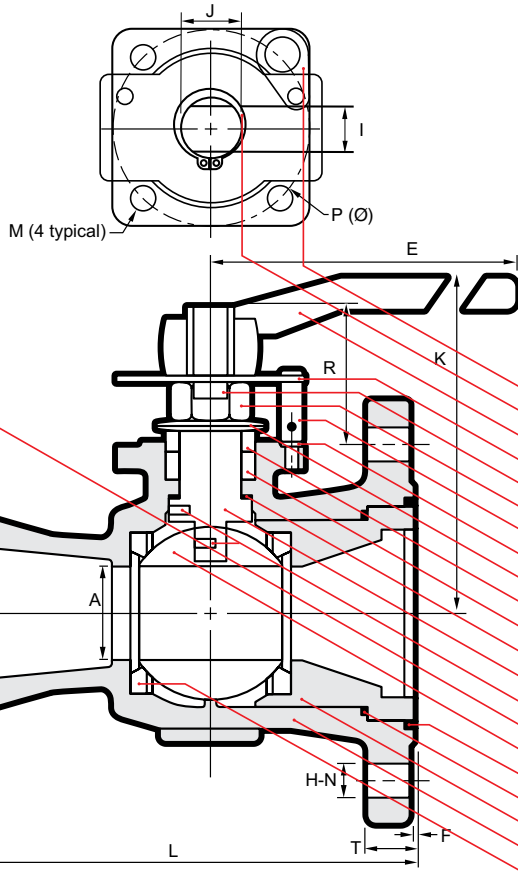
Reduced port, One piece body
ANSI B16.34 Class 150
Blowout-proof stem
ISO 5211 Mounting pad
Floating Ball, Anti-static device
Fire-safe design
Comply to NACE MR-01-75-2002
& MR-01-03

Model F-150-LC-R-SS-N (LCC body) is available

NAME / MATERIAL

Model Code:	CS	LC	*FS
1. Lock Plate /	Stainless Steel A276 Type 304		
2. Retaining Ring /	Carbon Steel		
3. Handle /	Ductile Iron		
4. Stopper Plate /	Stainless Steel A276 Type 304		
5. Lock Washer /	Stainless Steel A276 Type 304		
6. Gland Nut /	Carbon Steel		
7. Stopper Pin /	Stainless Steel A276 Type 304		
8. Lock Washer /	Stainless Steel A276 Type 304		
9. Belleville Washer /	Stainless Steel 301		
10. Gland /	Stainless Steel A276 Type 304		
11. Packing /	PTFE		(Graphite)
12. Thrust Washer /	Reinforced Teflon 15% GFT		
13. Stem /	Stainless Steel A276 Type 316		
14. Anti-Static Device /	Stainless Steel A276 Type 304		
15. Identification Plate /	Stainless Steel A276 Type 304		
16. Ball /	Stainless Steel A351 - CF8M (316)		
17. N/A			(Body Seal / Graphite)
18. Body Seal /	PTFE (TFM-1600)		
19. Body Insert /	Cast Steel A216-WCB		(A352 LCC)
20. Body /	Cast Steel A216-WCB		(A352 LCC)
21. Seat /	PTFE (TFM-1600)		

*Fire Safe Certified to API-607



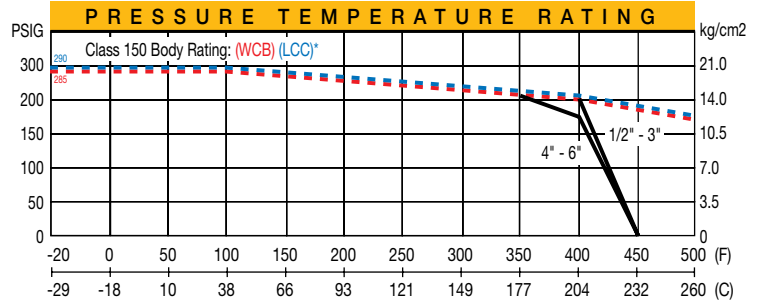
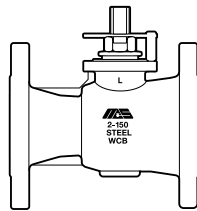
3.2

FIG.	F-150-CS-R-SS-FS-N	CLASS	150	SIZE	2	B16.34
SEAT	PTFE	BODY	WCB	TRIM	316	NACE
RATING	285 PSIG AT 100°F/200 PSIG AT 400° MAX					

CS - IDENTIFICATION PLATE

FIG.	F-150-LC-R-SS-N	CLASS	150	SIZE	2	B16.34
SEAT	PTFE	BODY	LCC	TRIM	316	NACE
RATING	290 PSIG AT 100°F/200 PSIG AT 400° MAX					

LC - IDENTIFICATION PLATE



*LCC body rated to -50F/-46C

size	D		I		M		E		N		S		I		O		N		ISO 5211 flange type	Weight (kg/lb)
	A	B	C	D	E	F	G	H	I	J	K	L	M	N	P	T	R			
2"	38	50	120.5	152	230	1.6	92	19	14	20	125	178	⁵ / ₁₆ " UNC	4	70	15.9	49	F07	8.00	
	1.50	1.97	4.75	5.98	9.06	0.06	3.62	0.75	0.55	0.79	4.92	7.00			2.76	0.63	1.93		17.60	
3"	58	76	152.5	190	400	1.6	127	19	17	25	168	203	³ / ₈ " UNC	4	70	19.1	59	F07	15.70	
	2.28	3.00	6.00	7.48	15.75	0.06	5.00	0.75	0.67	0.98	6.61	8.00			2.76	0.75	2.32		34.54	
4"	76	102	190.5	229	400	1.6	157	19	17	25	183	229	³ / ₈ " UNC	8	70	23.9	59	F07	24.60	
	3.00	4.02	7.50	9.02	15.75	0.06	6.18	0.75	0.67	0.98	7.20	9.02			2.76	0.94	2.32		54.12	
6"	114	152	241.5	279	750	1.6	216	22	23	34	245	267	¹ / ₂ " UNC	8	125	25.4	73	F12	49.50	
	4.49	5.98	9.50	10.98	29.53	0.06	8.50	0.88	0.91	1.34	9.65	10.51			4.92	1.00	2.87		108.90	