

# F Series Flanged Stainless Steel Ball Valves

## F-300-SS-R-N



Reduced port, One piece body  
ANSI B16.34 Class 300  
Blowout-proof stem  
ISO 5211 Mounting pad  
Floating Ball, Anti-static device  
Fire-safe design  
Comply to NACE MR-01-75-2002  
& MR-01-03

### NAME / MATERIAL

Model Code;	*FS
1. Lock Plate / Stainless Steel A276 Type 304	
2. Retaining Ring / Carbon Steel	
3. Handle / Ductile Iron	
4. Stopper Plate / Stainless Steel A276 Type 304	
5. Lock Washer / Stainless Steel A276 Type 304	
6. Gland Nut / Stainless Steel A276 Type 304	
7. Stopper Pin / Stainless Steel A276 Type 304	
8. Lock Washer / Stainless Steel A276 Type 304	
9. Belleville Washer / Stainless Steel 301	
10. Gland / Stainless Steel A276 Type 304	
11. Packing / PTFE	(Graphite)
12. Thrust Washer / RPTFE 15% GFT	
13. Stem / Stainless Steel A276 Type 316	
14. Anti-Static Device / Stainless Steel A276 Type 304	
15. Identification Plate / Stainless Steel A276 Type 304	
16. Ball / Stainless Steel A351 - CF8M (316)	
17. N/A	(Body Seal / Graphite)
18. Body Seal / PTFE	
19. Body Insert / Stainless Steel A351 - CF8M (316)	
20. Body / Stainless Steel A351 - CF8M (316)	
21. Seat / PTFE (TFM-1600)	

\*Fire Safe Certified to API-607

3.10

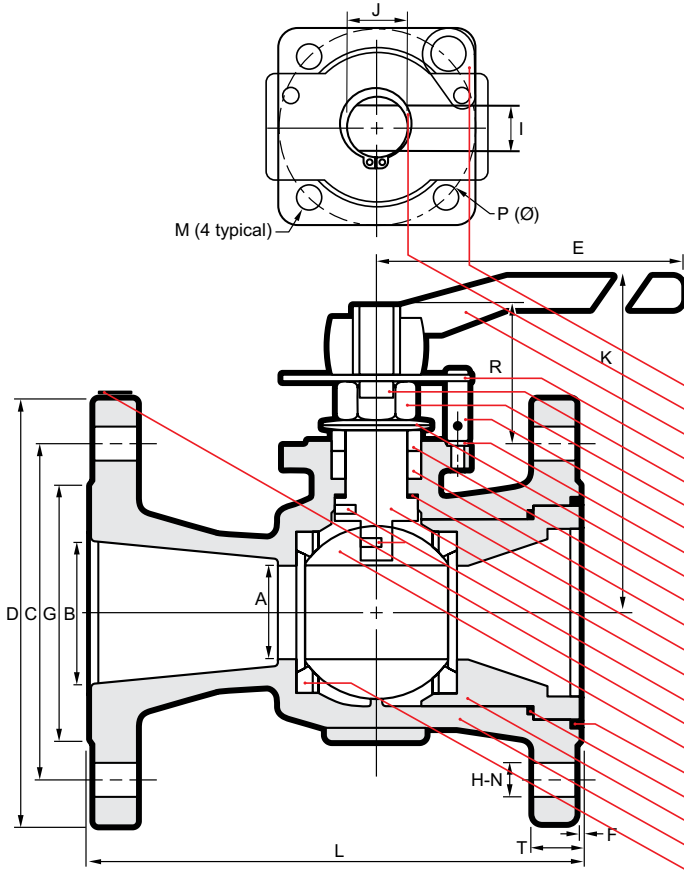
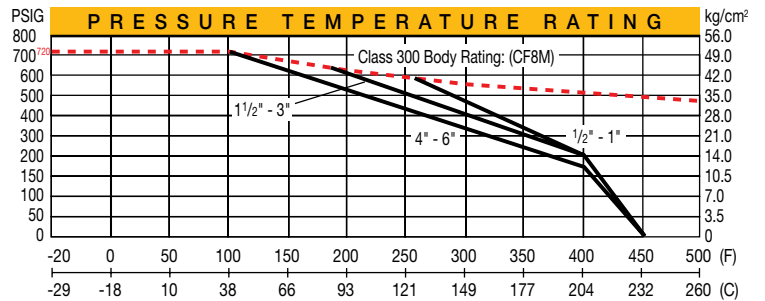
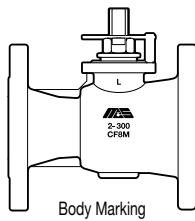


FIG.	F-300-SS-R-N	CLASS	300	SIZE	2	B16.34
SEAT	PTFE	BODY	CF8M	TRIM	316	NACE
RATING	720 PSIG AT 100°F/195 PSIG AT 400° MAX					
SS - IDENTIFICATION PLATE						

FIG.	F-300-SS-R-FS-N	CLASS	300	SIZE	2	B16.34
SEAT	PTFE	BODY	CF8M	TRIM	316	NACE
RATING	720 PSIG AT 100°F/195 PSIG AT 400° MAX					
SS-FS - IDENTIFICATION PLATE						



size	D		I		M		E		N		S		I		O		N		ISO 5211 flange type	Weight (kg/lb)
	A	B	C	D	E	F	G	H	I	J	K	L	M	N	P	T	R			
2"	38	50	127	165	230	1.6	92	19	14	20	125	216	5/16 UNC	8	70	22.3	49	F07	11.19	
	1.50	1.97	5.00	6.50	9.06	0.06	3.62	0.75	0.55	0.79	4.92	8.50			2.76	0.88	1.93		24.62	
3"	58	76	168	210	400	1.6	127	22	17	25	168	283	3/8" UNC	8	70	28.5	59	F07	23.47	
	2.28	3.00	6.61	8.27	15.75	0.06	5.00	0.88	0.67	0.98	6.61	11.14			2.76	1.12	2.32		51.63	
4"	76	102	200	254	400	1.6	157	22	17	25	183	305	3/8" UNC	8	70	31.8	59	F07	35.72	
	3.00	4.02	7.87	10.00	15.75	0.06	6.18	0.88	0.67	0.98	7.20	12.00			2.76	1.25	2.32		78.58	
6	114	152	270	318	750	1.6	216	22	23	34	245	403	1/2" UNC	12	125	36.6	73	F12	79.21	
	4.49	5.98	10.63	12.52	29.53	0.06	8.50	0.88	0.91	1.34	9.65	15.87			4.92	1.44	2.87		174.26	