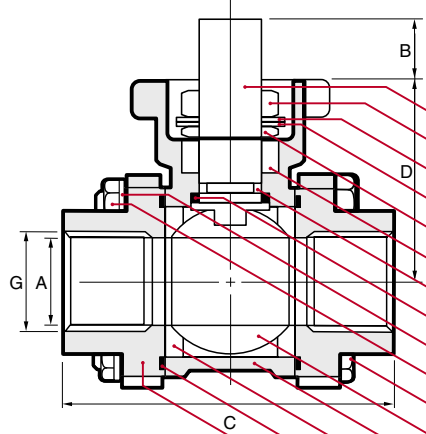
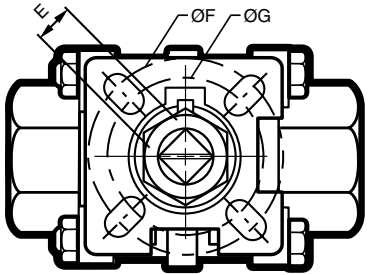


G Series Investment Cast Stainless Steel Ball Valves

G3-ED

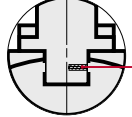


Full port
NPT Threads to ANSI B1.20.1
Three piece body
Blowout-proof stem
Adjustable live-loaded packing
Anti-static device
Floating Ball
ISO 5211 direct mounting pad
Compatible with Max-Air/MAS
1000 PSI, WOG 1/2" to 2"



NAME / MATERIAL	
1.	Stem / Stainless Steel 316 - A276
2.	Packing Nut / Stainless Steel 304 - A276
3.	Lock Washer / Stainless Steel 304 - A276
4.	Bellville Washer / Stainless Steel 304 - A276
5.	Packing Gland / Stainless Steel 304 - A276
6.	Packing / PTFE
7.	Stem Seal / VITON O-Ring
8.	Thrust Washer / RPTFE (MG1241)
9.	Bolt Washer / Stainless Steel 304 - A276
10.	Hex Nut / Stainless Steel 304 - A276
11.	Bolt / Stainless Steel 304 - A276
12.	Ball / Stainless Steel 316 - A 351 - CF8M
13.	Body / A351 - CF8M
14.	Seat / Reinforced Teflon 15% GFT
15.	Gasket / PTFE
16.	Cap / A351 - CF8M
17.	Spring & Pin Anti-static Device / Stainless Steel 304 - A276

- Markings to MSS-SP25
- Material test results & inspection certificates available upon request.
- CRN numbers available upon request



D I M E N S I O N S						
size	15	20	25	32	40	50
mm/in	1/2	3/4	1	1 1/4	1 1/2	2
A	15.0	20.0	24.0	31.8	38.1	50.0
mm/in	0.590	0.787	0.945	1.252	1.500	1.968
B	10.0	10.0	11.0	11.0	17.0	17.0
mm/in	0.394	0.394	0.433	0.433	0.669	0.669
C	67.3	72.6	87.75	104.4	116.35	131.9
mm/in	2.650	2.858	3.455	4.110	4.581	5.193
D	36.3	39.5	50.5	56.0	70.6	79.00
mm/in	1.429	1.555	1.988	2.205	2.779	3.110
E	9.0	9.0	11.0	11.0	14.0	14.0
mm/in	0.354	0.354	0.433	0.433	0.551	0.551
F	42.0	42.0	50.0	50.0	70.0	70.0
mm/in	1.653	1.653	1.968	1.968	2.756	2.756
G	36.0	36.0	42.0	42.0	50.00	50.00
mm/in	1.417	1.417	1.653	1.653	1.968	1.968
CV	26.0	50.0	68.0	120.0	170.0	360.0
weights	0.530	0.680	1.030	1.720	2.490	3.800
kg/lb	1.166	1.496	2.266	3.784	5.478	8.360

