



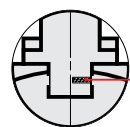
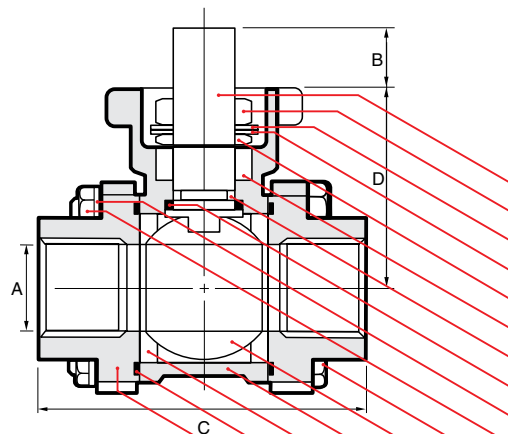
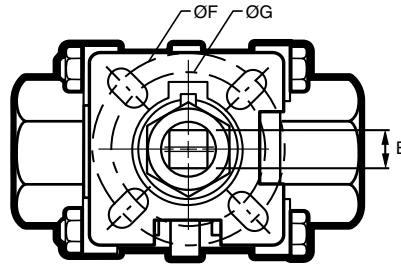
M. A. Stewart & Sons Ltd.
VALVES AND FITTINGS

G Series Investment Cast Stainless Steel Direct Mount Ball Valves

G3-ED



2.7

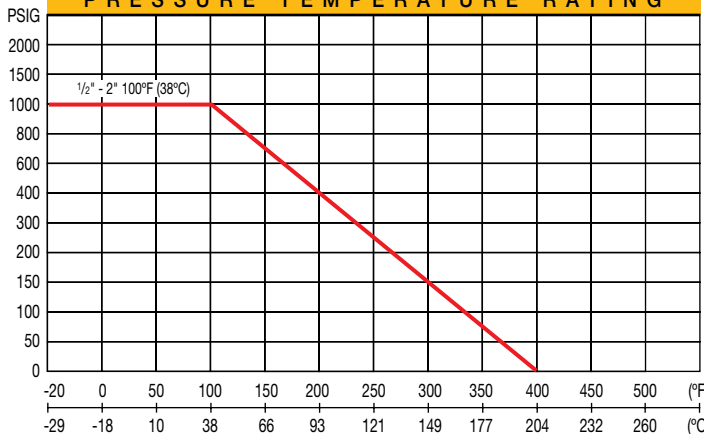


- Full port
- NPT Threads to ANSI B1.20.1
- Three piece body
- Blowout-proof stem
- Adjustable live-loaded packing
- Anti-static device
- Floating Ball
- ISO 5211 direct mounting pad
- 1000 PSI, WOG 1/2" to 2"
- Compatible with Max-Air/
MAS Actuators**

NAME / MATERIAL

1. Stem / Stainless Steel A276 Type 316
2. Packing Nut / Stainless Steel A276 Type 304
3. Lock Washer / Stainless Steel A276 Type 304
4. Belleville Washer / Stainless Steel A276 Type 304
5. Packing Gland / Stainless Steel A276 Type 304
6. Packing / PTFE
7. Stem Seal / VITON O-Ring
8. Thrust Washer / RPTFE (MG1241)
9. Bolt Washer / Stainless Steel A276 Type 304
10. Hex Nut / Stainless Steel A194 Grade 8
11. Bolt / Stainless Steel A193 Grade B8
12. Ball / Stainless Steel A351 - CF8M (316)
13. Body / Stainless Steel A351 - CF8M (316)
14. Seat / Reinforced Teflon 15% GFT
15. Gasket / PTFE
16. Cap / Stainless Steel A351 - CF8M (316)
17. Spring & Pin Anti-static Device / Stainless Steel A276 Type 304

PRESSURE TEMPERATURE RATING



D I M E N S I O N S

size	15	20	25	32	40	50
mm/in	1/2	3/4	1	1 1/4	1 1/2	2
A	15.0	20.0	24.0	31.8	38.1	50.0
mm/in	0.590	0.787	0.945	1.252	1.500	1.968
B	10.0	10.0	11.0	11.0	17.0	17.0
mm/in	0.394	0.394	0.433	0.433	0.669	0.669
C	67.3	72.6	87.75	104.4	116.35	131.9
mm/in	2.650	2.858	3.455	4.110	4.581	5.193
D	36.3	39.5	50.5	56.0	70.6	79.00
mm/in	1.429	1.555	1.988	2.205	2.779	3.110
E	9.0	9.0	11.0	11.0	14.0	14.0
mm/in	0.354	0.354	0.433	0.433	0.551	0.551
F	42.0	42.0	70.0	50.0	70.0	70.0
mm/in	1.653	1.653	2.756	1.968	2.756	2.756
G	36.0	36.0	50.0	42.0	50.00	50.00
mm/in	1.417	1.417	1.968	1.653	1.968	1.968
CV	26.0	50.0	68.0	120.0	170.0	360.0
weights	0.530	0.680	1.030	1.720	2.490	3.800
kg/lb	1.166	1.496	2.266	3.784	5.478	8.360