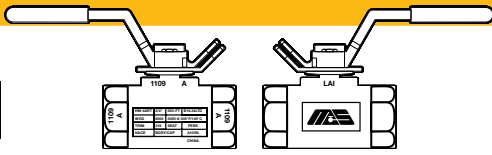


# HM Series Forged Steel 6000 PSI Ball Valves

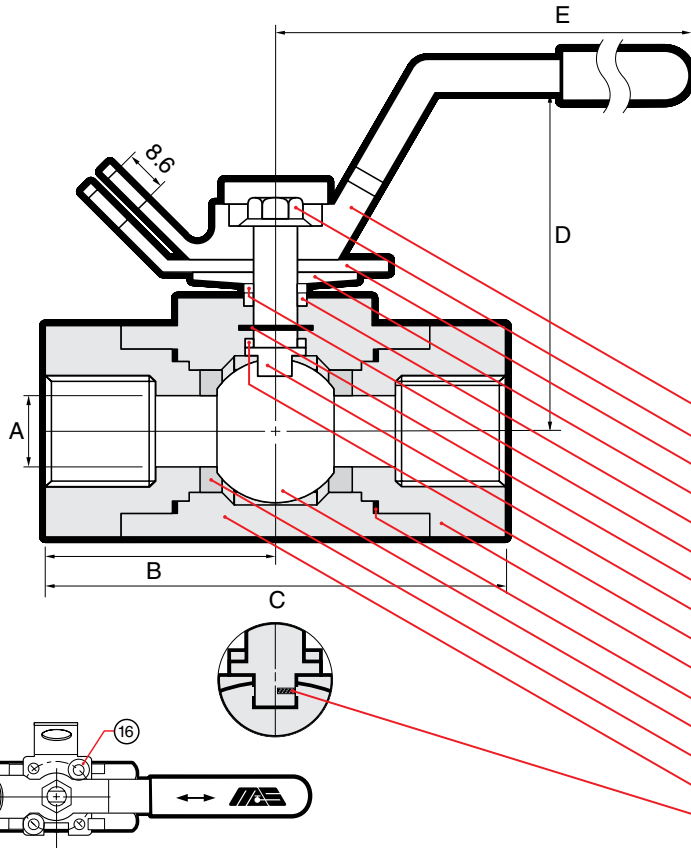
## HM-6ART/LRT



1.6

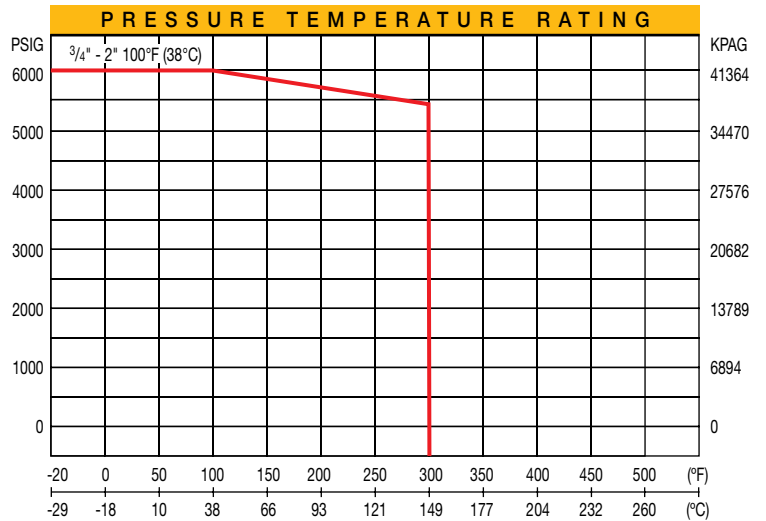


- Reduced Port
- Floating Ball
- Three Piece Threaded Body
- LF2 & A105N Forged Steel Construction
- NPT Threads to ANSI B1.20.1
- Blowout Proof Stem
- Anti-Static Design
- Positive Lock-Out Device
- Fire-Safe Certified to  
API-607 5th Edition**
- Comply to NACE MR-01-75-2002  
& MR-01-03
- 6000 P.S.I. W.O.G. (Class 2500 Ltd) 3/4"-2"



NAME / MATERIAL	
ART	LRT
1. Handle / Ductile Iron	
2. Handle Nut / A36 C.S. Plated	
3. Gland Flange / A36 C.S. Plated	
4. Belleville Washer / S.S. 301	
5. Packing / Graphite	
6. Gland / Stainless Steel A276 Type 304	
7. Stem O-ring / HNBR (1 1/2" - 2")	
8. Stem / Stainless Steel A276 Type 316	
9. Thrust Washer / Peek	
10. Cap / Forged Steel A105N	A350 GR LF2
11. Body O-ring / HNBR	
12. Ball / Stainless Steel A351 GR CF8M	
13. Seat / Peek	
14. Body / Forged Steel A105N	A350 GR LF2
15. Spring and Pin / Stainless Steel A276 Type 304	
16. Cap Screw / A36 C.S. Plated	

DIMENSIONS					
size	20	25	32	40	50
mm/in	3/4	1	1 1/4	1 1/2	2
A	12.7	22.2	22.2	32.0	38.1
mm/in	0.50	0.87	0.87	1.26	1.50
B	55.0	66.5	76.0	79.5	92.0
mm/in	2.19	2.62	2.99	3.13	3.62
C	111.0	133.0	152.0	159.0	184.0
mm/in	4.37	5.24	5.98	6.26	7.24
D	83.0	112.0	112.0	138.0	143.0
mm/in	3.27	4.41	4.41	5.43	5.63
E	122.0	172.0	172.0	279.0	279.0
mm/in	4.80	6.77	6.77	10.98	10.98
CV	15	35	35	100	175
Weights	1.19	2.62		6.20	10.20
kg/lb	2.62	5.78		13.67	22.49



For A105N low temp limit is -20°F (-29°C)

For LF2 low temp limit is -40°F (-40°C)