

RED-WHITE



125 - POUND CAST IRON STRAINERS

"Y" pattern, stainless steel screen, bolted cover, flanged ends.



WORKING PRESSURES			
Nominal pressure, non - shock		Hydrostatic test pressure	
Steam	Water Oil, Gas	Shell	
Psig 125	200	350	
Bar 8.6	13.8	24.1	

M A T E R I A L S			
No.	Name of parts	ASTM specification	
1	Body	Cast iron	A126 Class B
2	Cover	Cast iron	A126 Class B
3	Screen	Stainless steel	A167 Type 304
4	Cover stud bolt	Steel*	A307 Grade B
5	Cover stud bolt nut	Steel*	A563 Grade A
6	Drain plug	Malleable iron	A197
7	Support ring	Stainless steel	A176 Type 403
8	Gasket	Non-asbestos joint sheet	

*Zinc plated.

Note:

End flange dimensions and drilling conform to ANSI B16.1. End flanges are fully flat faced and smooth finished in accordance with MMS SP-6.

*Design and materials are subject to change without notice.

Marking on the body

6
125S
200WOG
➔

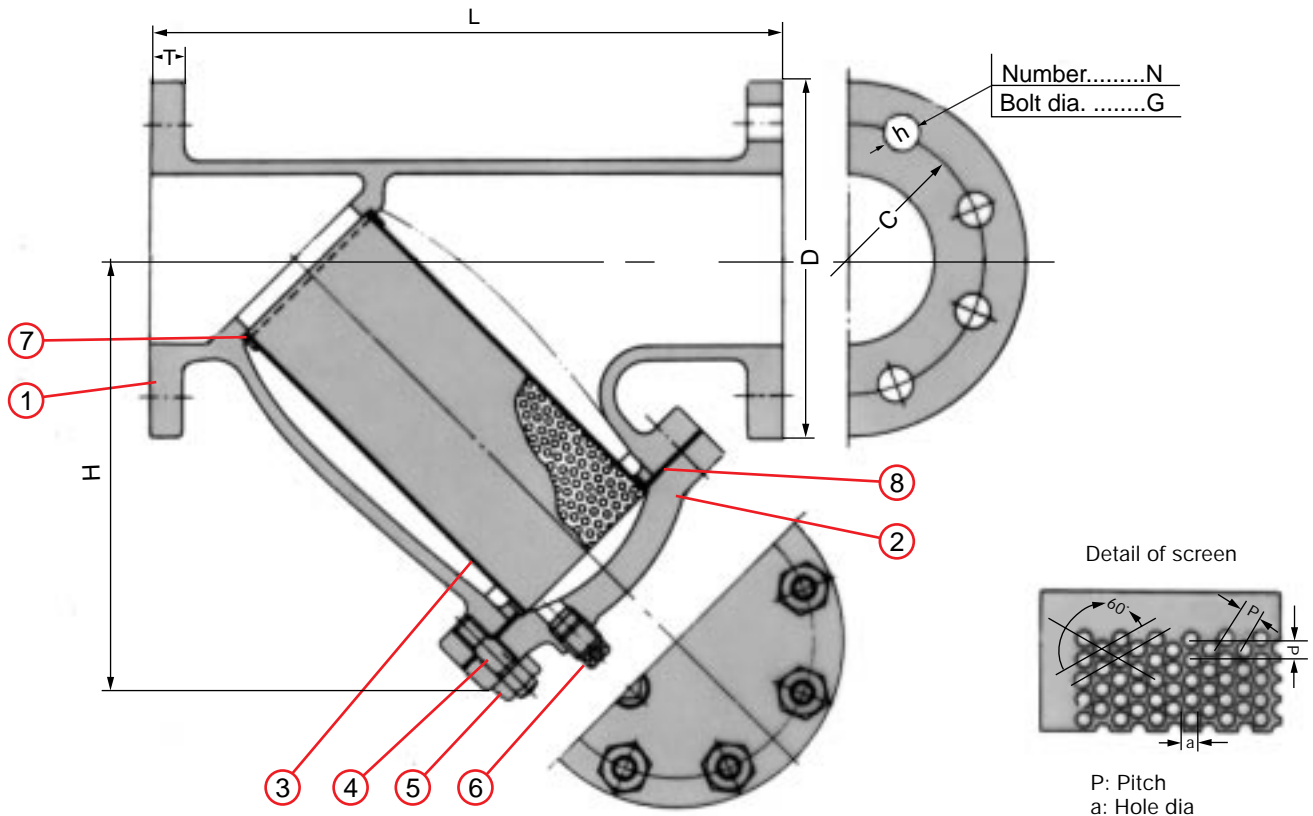
One side

RED-WHITE



Other side

FIG. NO. 381A



D I M E N S I O N S		2	2 1/2	3	4	5	6	8	10	12
L	size (in.)	250	286	318	378	452	518	610	749	857
	mm/in	9.84	11.26	12.52	14.88	17.99	20.39	24.02	29.49	33.74
H	size (in.)	167	193	210	255	318	364	442	530	598
	mm/in	6.57	7.60	8.27	10.04	12.52	14.33	17.40	20.87	23.54
D	size (in.)	152	178	191	229	254	279	343	406	483
	mm/in	6.00	7.00	7.50	9.00	10.00	11.00	13.50	16.00	19.00
C	size (in.)	121	140	152	191	216	241	299	362	432
	mm/in	4.75	5.50	6.00	7.50	8.50	9.50	11.75	14.25	17.00
N	size (in.)	4	4	4	8	8	8	8	12	12
	mm/in	4	4	4	8	8	8	8	12	12
h	size (in.)	19.0	19.0	19.0	19.0	22.2	22.2	22.2	25.4	25.4
	mm/in	0.75	0.75	0.75	0.75	0.88	0.88	0.88	1.00	1.00
G	size (in.)	15.9	15.9	15.9	15.9	19.0	19.0	19.0	22.2	22.2
	mm/in	0.62	0.62	0.62	0.62	0.75	0.75	0.75	0.88	0.88
T	size (in.)	15.9	17.5	19.0	23.8	23.8	25.4	28.6	30.2	31.8
	mm/in	0.62	0.69	0.75	0.94	0.94	1.00	1.12	1.19	1.25
a	size (in.)	1.5	1.5	1.5	1.5	1.5	1.5	1.5	2.0	2.0
	mm/in	0.059	0.059	0.059	0.059	0.059	0.059	0.059	0.079	0.079
p	size (in.)	2.5	2.5	2.5	2.5	2.5	2.5	2.5	3.0	3.0
	mm/in	0.099	0.099	0.099	0.099	0.099	0.099	0.099	0.118	0.118
Weight	size (in.)	10.5	15.5	20.1	34.2	50.5	68.3	111.3	182.0	263.0
	kg/lb	23	34	44	75	111	150	245	400	579

D A T A		O F										S C R E E N	
size (in.)		2	2 1/2	3	4	5	6	8	10	12			
Number	in ²	119.4	119.4	119.4	119.4	119.4	119.4	119.4	119.4	82.8	82.8		
of holes	cm ²	18.5	18.5	18.5	18.5	18.5	18.5	18.5	18.5	12.8	12.8		
Open area (%)		32.7	32.7	32.7	32.7	32.7	32.7	32.7	32.7	40.3	40.3		
Total	in ²	34.52	41.58	57.08	94.97	161.22	222.81	376.61	565.88	780.58			
screen area	cm ²	222.72	268.25	368.24	612.70	1040.12	1437.49	2429.74	3650.84	5036.00			